

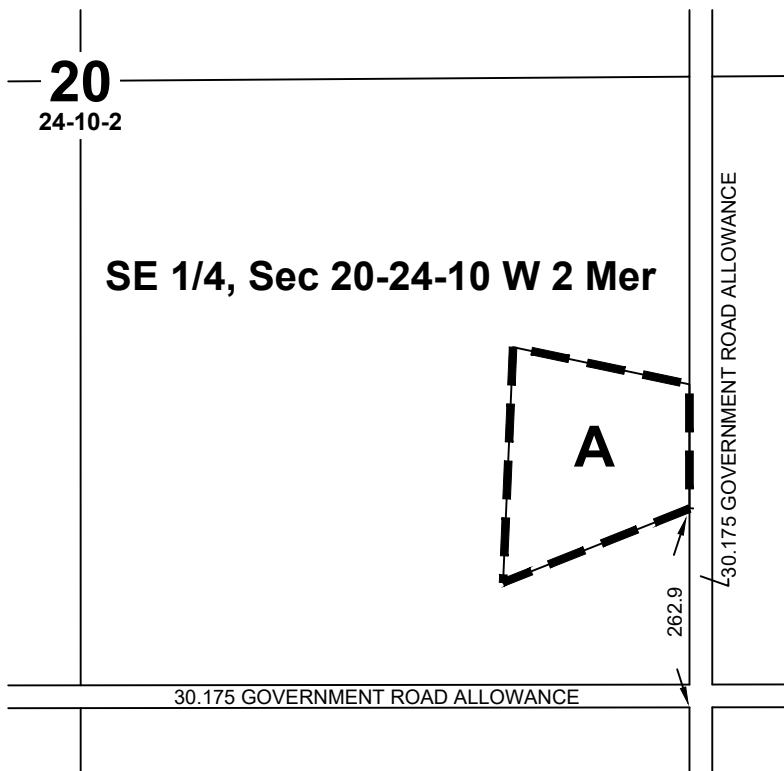


PLAN SHOWING

PLAN OF PROPOSED SUBDIVISION
 OF PART OF
SE1/4 SEC 20, TWP 24, RGE 10, W2 Mer
 IN THE
R.M. OF TULLYMET No. 216
SASKATCHEWAN
2022

SCALE = 1: 2000

KEY PLAN



NOTES

- MEASUREMENTS ARE IN METRES AND DECIMALS THEREOF.
- SOME MEASUREMENTS ARE APPROXIMATE AND MAY DIFFER FROM THE FINAL PLAN OF SURVEY BY AS MUCH AS 5 METRES.
- PORTION TO BE APPROVED IS OUTLINED WITH A BOLD DASHED LINE AND CONTAINS 5.70 ha (14.08 ac)

SURVEYORS CERTIFICATION

Date _____

Saskatchewan Land Surveyor



APPROVING AUTHORITY STAMP

 CLERK OF THE LOCAL AUTHORITY

(affix seal here)



MIDWEST SURVEYS INC.
 405 MAXWELL CRESCENT
 REGINA, SK
 S4N 5X9
 TEL: 306-525-8706

S:\2022\RC-0238-22\CADD\RC-0238-22-J1-PPS-1_Rev0

No.	DATE	REVISION / ISSUED	JOB No.	PAGE 1 OF 1
0	Nov 7, 2022	Plan Issued	RC-0238-22	0 REVISION
SURVEYED BY: CG		CALC'D BY: CS	DRAWN BY: DJS	